



**Lighter
Stronger
Better!**

**Strongest Built
Australian Made
Lifetime Warranty**

PN: NBM115SY



Fitting Guide & Owners Manual MITSUBISHI PAJERO

SPORT 11/19 on

76mm NUDGE BAR

VEHICLE FRONTAL PROTECTION SYSTEM (VFPS)
FOR AIR BAG & ADR COMPLIANT VEHICLES

**SUPERCARS
OFFICIAL BULLBAR
OF SUPERCARS**

Index

Pages 3-5

ECB's Benefits
Product Care

Pages 6-7

Stage 1 - Vehicle preparation
Stage 2 - Radiator Cover
Stage 3 - Grille removal
Stage 4 - Chrome Bumper Mouldings
Stage 5 - Harness information
Stage 6 - Remove Bumper

Pages 8-9

Stage 7 - Stone Tray
Stage 8 - Chassis spacers
Stage 9 to 10 - Install steel mounts
Stage 11 - Sensor relocation
Stage 12 - Refit Bumper

Pages 10-11

Stage 13 - Install Nudge Bar
Stage 14 - Align, tighten, connect and test
Final Checks & Installation Kit

Pages 12-13

Finished Product
Warranty Registration

Pages 14-15

Notes

The Features of ECB

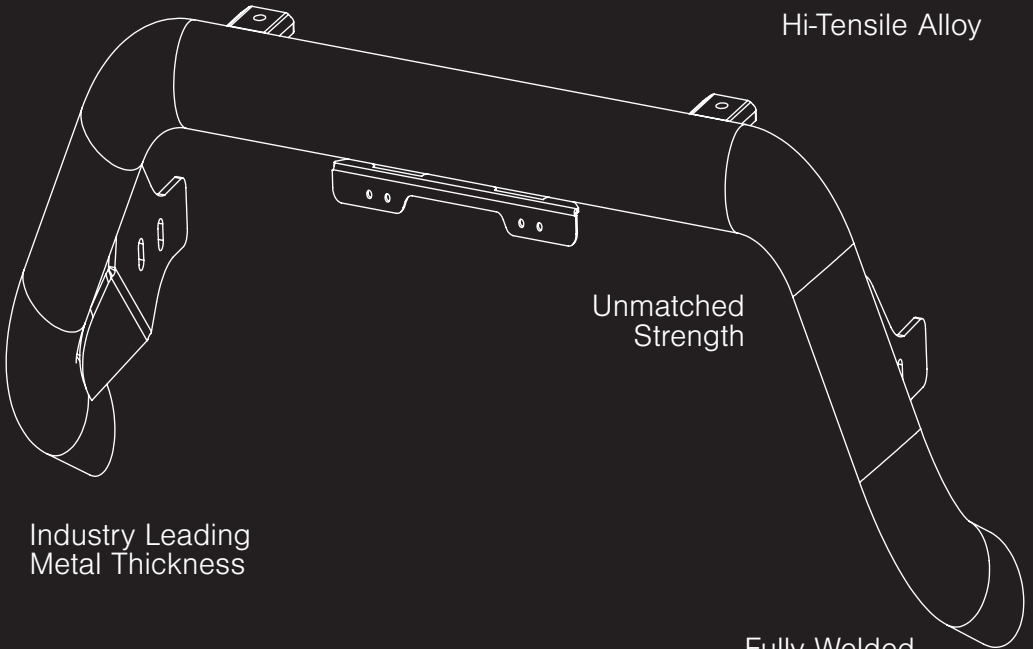
Rust Free

Hi-Tensile Alloy

Unmatched
Strength

Industry Leading
Metal Thickness

Fully Welded
Construction



ECB's Benefits

Built to Perform - Not to a Price

ECB are proud to claim that their channels are not jigsaw puzzles that are bolted together, or even multiple sections welded together. Where any welding is required, it is done to the highest standards by qualified welders, not machines.

Anti-Corrosive Nature of Alloy

The composition of ECB's alloy has a very high resistance to corrosion. Rust not only looks unappealing but greatly reduces the strength of the metal. Rust can and will weaken the structural integrity of a steel bullbar effectively rendering it useless over time.

Australian Made

Established in 1971, we utilise over 46 years of experience designing, engineering and building products in Australia to suit Australian conditions. We can ensure the best quality controls and help support the local economy and employ over 90 proud Australians.

Weight Saving Benefits

An ECB alloy bullbar is typically half the weight of a steel bullbar. Unnecessary suspension upgrades are not required. The reduced weight also contributes to increased fuel economy and less wear and tear on tyres, suspension and braking components.

Welds That Work

ECB uses only the strongest welds and welding techniques to ensure every product is as structurally sound as possible. MIG (Metal Inert Gas) welding techniques are employed ensuring the welds are as thick as the thickest section of alloy's being joined together.

Lifetime Warranty

ECB provide a lifetime warranty and consumer guarantee on all of our manufactured products. This guarantee highlights the confidence in our ability and provides complete peace of mind for your purchase for the lifetime you own your vehicle.

Product Care

Polished Products

Being a premium mirror polished finish, regular maintenance will be required to keep that iconic ECB shine. We recommend using our own brand of Aluminium Polish. This formula has been tried and tested and in our opinion is the world's best standard.

Directions: Apply a small quantity of Aluminium Polish to a clean soft cloth and rub the metal surface. The longer the rubbing the brighter the surface becomes. Wipe off Aluminium Polish with clean soft cloth. Also suitable for motorised buffing machines. **Note: There are more specific details on the polish bottle. Please read before use.**

Powdercoated Products

Our powdercoated finishes are very low maintenance. Infact there is actually very little you will ever need to do for this product. Just clean it as you would your car and it will stay looking good as new.

ECB Aluminium Polish

When you're looking for that showroom finish look for your polished automotive products, you can depend on the no compromise quality of East Coast Bullbars Aluminium Polish. This specifically designed product is the best polish available and we guarantee that this \$#!+ works. With over 40 years of manufacturing polished alloy products we have trialled a large range of different polishes on the market and believe without a doubt that nothing beats the finish quality of East Coast Bullbars Aluminium Polish.

East Coast Bullbars Aluminium Polish is excellent for use by hand and is ideal for polished bullbars, nudge bar and stainless steel products. This polish will clean, polish and protect your product from the elements whilst bringing your products back to that showroom finish look.



NBM115SY

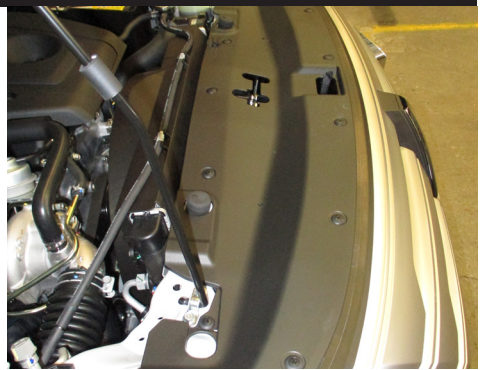
Stage 1

- Test drive vehicle to ensure all driver assists are correctly working and to gauge effectiveness. Park on a flat level surface.
- Apply parking brake and lift bonnet.
- Unwrap ECB Protection bar and disconnect mounts. Discard bolts.
- Ensure these instructions are left with the vehicle owner and/or operator.



Stage 2

- Remove eleven (11) plastic screw clips from top of panel and remove plastic panel.



Stage 3

- Remove plastic screw clip beside headlight, one (1) each side. Gently pulling forward on lower grille to release clips from bumper and remove grille.



Pajero Sport 11/19 on

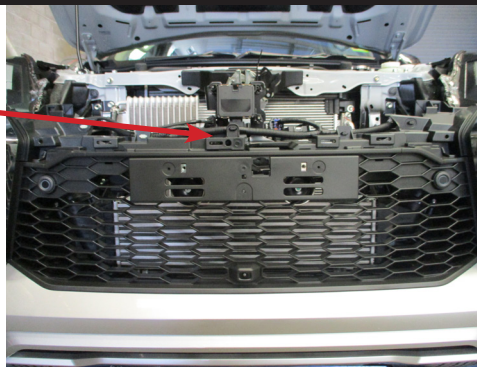
Stage 4

- Remove outer chrome infill's from bumper. Gently pull out on corner to release clip.
- Once removed, remove one (1) 10mm head bolt. Retain for refitment



Stage 5

- Disconnect three (3) wiring harness plugs from centre of bumper support.



Stage 6

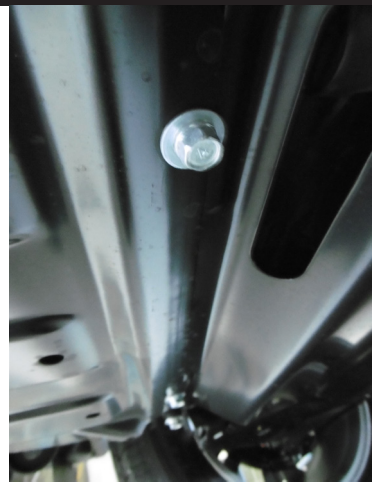
- Remove one plastic push/pull clip from top inner guard and three (3) 10mm head bolts from under outer bumper.
- Remove two (2) push pull clips (each side)
- Gently pull guards away from vehicle and remove bumper.



NBM115SY

Stage 7

- Remove two (2) 12mm head bolts from stone tray, loosen rear two (2) bolts and remove tray.



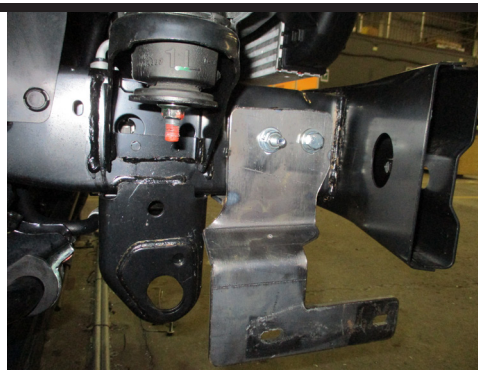
Stage 8

- Fit 10nb x 58mm tube spacer and M10 x 1.5 x 100mm bolts, flat washers, spring washers and nuts (supplied) into rails.



Stage 9

- Working on one side at a time attach ECB Steel mounting brackets (supplied) onto outside of chassis rail using M10 x 1.25 x 30mm bolt, spring washer and flat washer (supplied) into front captive nut.
- Use M10 x 1.5 x 100mm bolt, flat washer, 10nb x 58mm tube spacer and spring washer and nut (supplied) into rear hole.
- Repeat for other side.



Pajero Sport 11/19 on

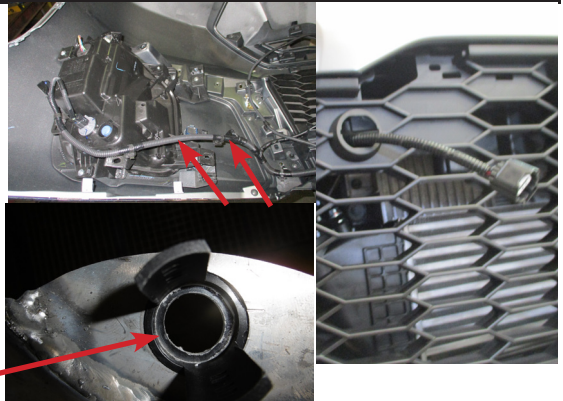
Stage 10

- Centralise ECB steel mounting brackets to front of vehicle
- Measure inside of alloy protection bar to set ECB steel mounting bracket in correct position.
- Align and **tighten bolts**.



Stage 11

- Remove two (2) centre parking sensors from bumper. Unclip harness from bumper if required, poke wiring through grille to allow fitment to sensor in Nudge Bar.
- Place 3mm clear sensor spacer (supplied) into sensor mount then sensor. Place into sensor bracket in protection bar secure in position using zip ties (supplied).



3mm clear sensor spacer

Stage 12

- Refit bumper in reverse of step 4 to 6.



NBM115SY

Stage 13

- Fit Nudge Bar onto steel mounting brackets using two (2) M10 x 1.5 x 40mm bolts, two (2) M10 x 1.5 x 40mm bolts with washer on 300mm wire, spring washer flat washer and nuts (supplied).



Stage 14

- Align Nudge bar with vehicle and **TIGHTEN ALL BOLTS.**
- Connect sensors and test for correct operation.
- Refit stone guard using original equipment.



Final Checks & Installation Kit

Ensure Number Plate is Clearly Visible

Note: When fitting/refitting the licence plate to the vehicle, ensure there is no obstruction to licence plate vision in accordance with local authorities. If required relocate licence plate to an alternate location.

Further VFPS Notes

1. Do not attach VFPS to the vehicle using anchorages not intended for this purpose (e.g. engine mounting bolts).
2. Do not use this product for any vehicle make or model, other than those specified by the VFPS manufacturer.
3. Do not remove the plaque or label from the VFPS.
4. Do not modify the structure of the VFPS in any way.
5. No accessory or fitment should project forward of the VFPS forward profile.
6. **Ensure these instructions are left with the vehicle owner and/or operator.**

Important Information

Periodically check bolts and nuts for correct tightness, especially if traveling on rough roads.

Installation Kit

1 - Pair ECB steel mounting brackets - (YNBM115)	2 - M10 x 1.5 x40mm bolts with washer on 300mm wire
2 - 10NB x 58mm spacer tubes	12 - M10 flat washers
2 - 3mm plastic sensor spacer (EAMB100_S3P)	8 - M10 spring washers
2 - M10 x 1.5 x 100mm bolts	6 - M10 X 1.5 nuts
2 - M10 x 1.25 x 30mm bolts	2 - 150mm zip ties
2 - M10 x 1.5 x 40mm bolts	

Finished Product



Warranty Registration

Contact Details

Name: _____

Address: _____

Product: _____

Email: _____

Phone: _____

Work Order Number: _____

You can find this on the silver label
of your ECB product.

By submitting this registration you automatically subscribe to ECB's mail outs. You
can unsubscribe at any time.

Register Online

For online registration please go online to www.ecb.com.au/warranty-registration
If you have any questions please contact our national office on 1800 069 145 or
www.ecb.com.au.



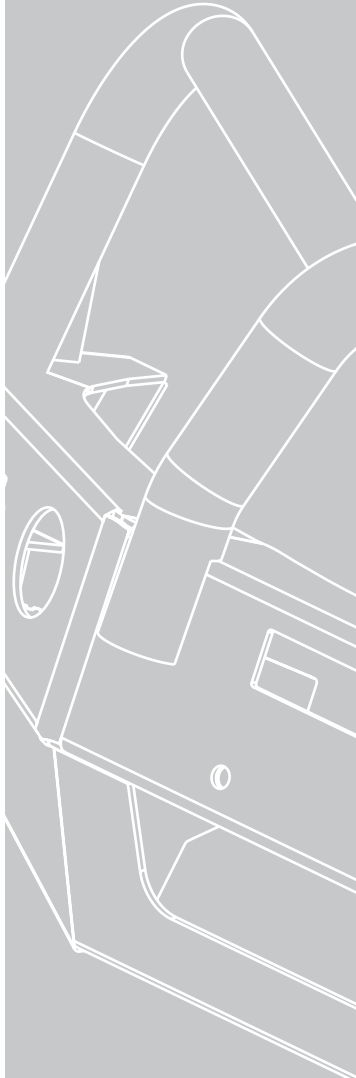
PN:NBM115SY
Please post to PO Box 122,
Margate QLD 4019

Notes

_____ Full Name

_____ Date

REPLACES: N/A
REVISED: 11.03.20



1800 069 145
www.ecb.com.au

Strongest Built Australian Made Lifetime Warranty

29 Snook St, Clontarf QLD 4019
PO Box 122, Margate QLD 4019